

Capio St Görän's quality data

Sweden is at the forefront in terms of the measurement and follow-up of medical quality via national quality registers and requirements of regional register reports for care providers. Patient satisfaction and staff statistics are also assessed in annual surveys. This long-standing tradition for quality measurements has resulted in extensive data concerning treatment results and process measurements. Treatment methods can be assessed and the data allows for

comparisons between methods and care units at national and regional level. Process measurements support the development of healthcare availability.

Stockholm County Council has a well-developed view of healthcare quality and their measurements span a wide range of quality indicators for the County's emergency hospitals.

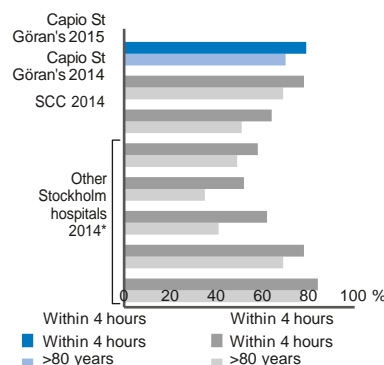
Fulfilment of targets of Stockholm County Council's quality indicators, 2011–2015 (%)

	2011	2012	2013	2014	2015
Capio St Görän's Hospital	96	99	98	96	99.7
Other Stockholm hospitals*	95	94	90	90	–
	92	92	87	88	–
	90	90	92	94	–
	93	93	97	94	–
	95	93	96	97	–

* Data for other Stockholm hospitals within SCC 2015 not available at publication of this Annual Report.

Source: Summary HSF/Stockholm County Council 2014

Waiting times, total length of stay, per emergency clinic

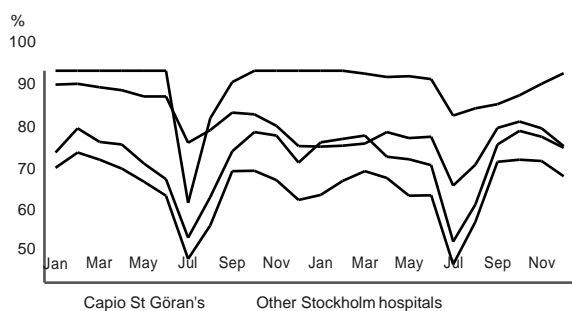


* Data for other Stockholm hospitals within SCC 2015 not available at publication of this Annual Report.

Source: Summary HSF/Stockholm County Council 2014

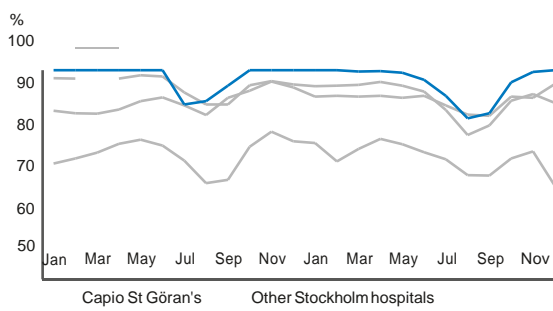
Fulfilment of the healthcare guarantee within Stockholm County Council per month, 2014–2015

Fulfilment of healthcare guarantee – Appointment



Source: SCC reporting data from the Central waiting times register 2016

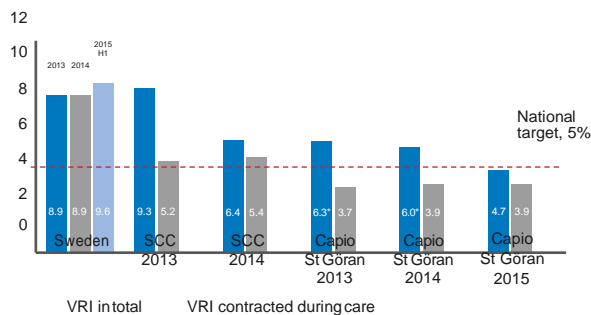
Fulfilment of healthcare guarantee – Treatment



Source: SCC reporting data from the Central waiting times register 2016

Capio St Görän's takes part in all mandatory and relevant registers, which together with its own quality management contribute to the hospital's development of its quality and availability. The graphs below present some vital quality results for Capio St Görän's in comparison with other Stockholm County Council hospitals, and national data.

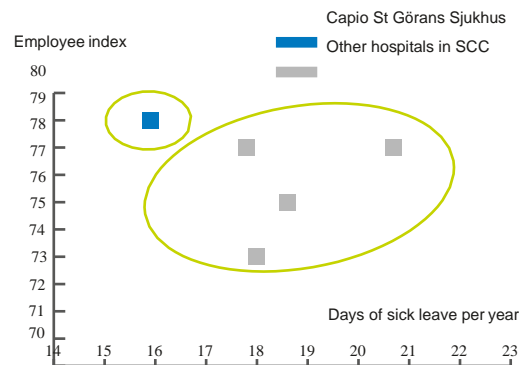
Share of healthcare-related infections (VRI) (%)



* All healthcare-related infections including infections not contracted at Capio St Görän's Hospital.

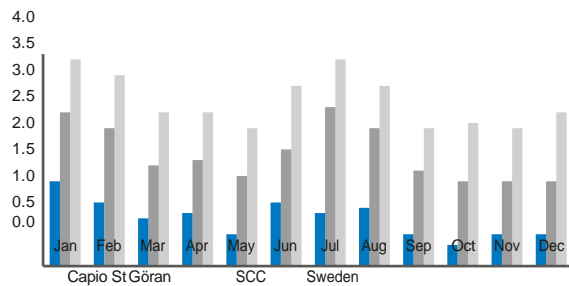
Source: Capio St Görän's Hospital, SCC, SKL

Employee index and days of sick leave 2015



Source: Data from respective hospital. Capio St Görän's Hospital from 2015. Other Stockholm hospitals in SCC show data from 2014

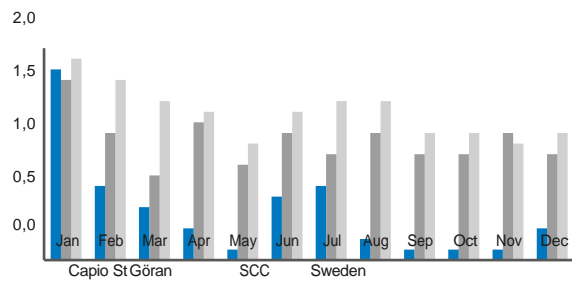
Number of overcrowding* per 100 available beds (somatic care), 2015



*Overcrowding is defined as an event when an admitted patient is cared for without the requirements for available beds being met.

Source: SKL2016

Number of outsourced* patients per 100 available beds (somatic care), 2015



*An outsourced patient is defined as a patient being admitted and cared for at a different care unit than the care unit holding specialist expertise and responsibility for the patient.

Source: SKL2016